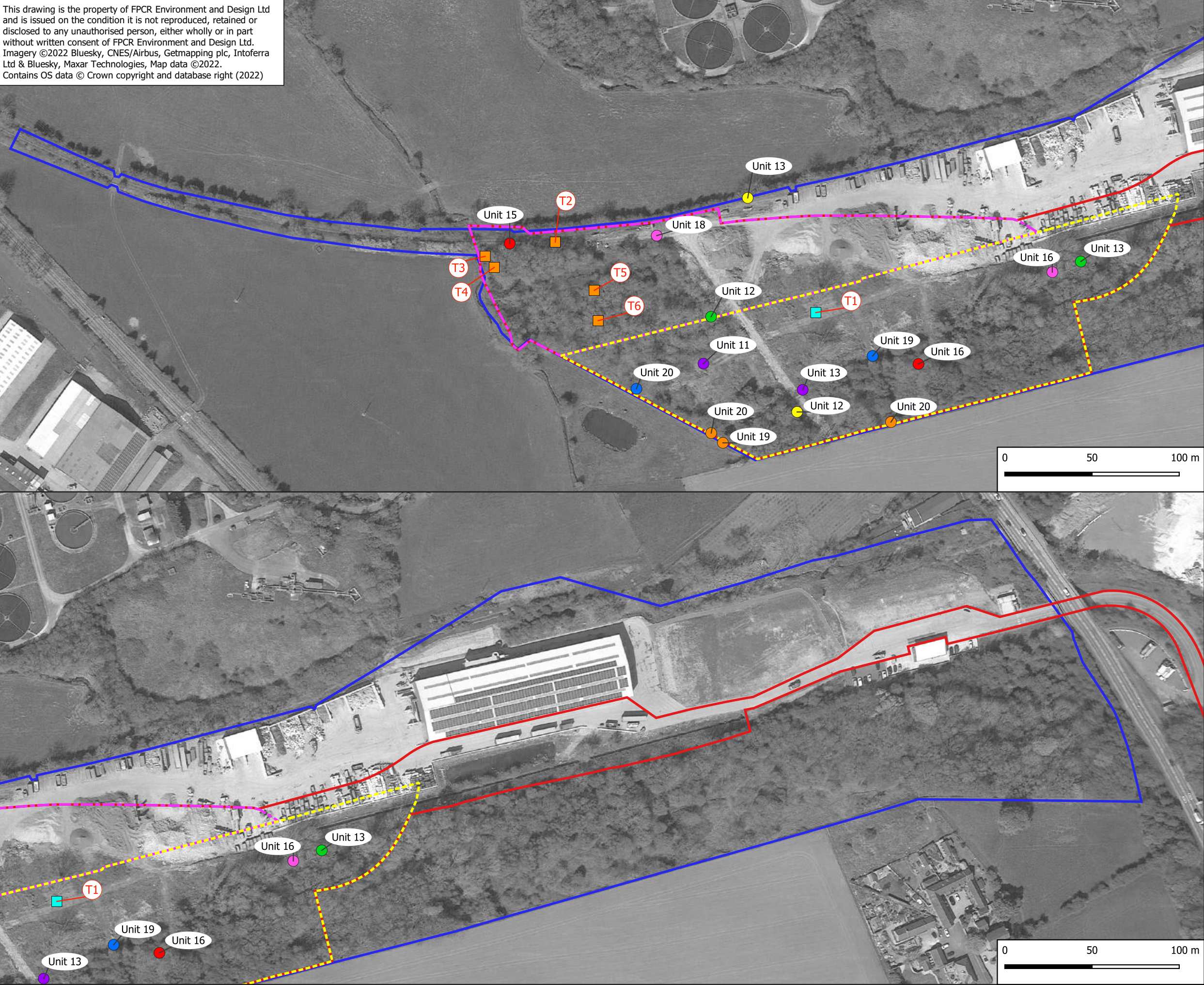



This drawing is the property of FPCR Environment and Design Ltd and is issued on the condition it is not reproduced, retained or disclosed to any unauthorised person, either wholly or in part without written consent of FPCR Environment and Design Ltd. Imagery ©2022 Bluesky, CNES/Airbus, Getmapping plc, Intoferra Ltd & Bluesky, Maxar Technologies, Map data ©2022. Contains OS data © Crown copyright and database right (2022)



B	29.09.22	Minor amendments	NJL/NJL
A	10.06.22	Trees with roost potential added	NJL/NJL
-	24.02.22	Initial draft	EH/NJL
rev	date	comment	drm/chk



client
R&P Clean Power Limited

project
Swadlincote Resource Recovery Park (SRRP)

drawing title
STATIC DETECTOR LOCATIONS & TREES WITH BAT ROOST POTENTIAL

drawing / figure number
7233-ES-8.5-08

Date printed
29/9/2022